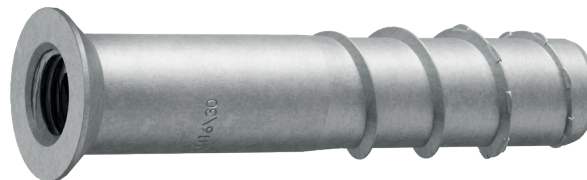


TOGE TSM A asphalt screw

Fastening directly in asphalt

Steel - anti-corrosion coated TOGE KORR

Version with female thread
IM 10 or IM 16



Item nr.	Designation	Bore Ø	Depth of drill hole $h_{01} / h_{02} / h_{03}$	Embedment depth of anchor $h_{nom1} / h_{nom2} / h_{nom3}$	Packing Unit
202 161 001	TSM A 16x100 IM10x20 SW12 KORR	16mm	110mm	100mm	50
202 221 000	TSM A 22x100 IM16 x 30 SW12 KORR	22mm	110mm	100mm	50
202 221 551	TSM A 22x155 IM16 x 30 SW12 KORR	22mm	165mm	155mm	40
500 000 014	Metric thread reducer M16/M12				25
500 000 015	Metric thread reducer M16/M10				25
500 000 002	Screw-in tool SW12				1

Composite Mortar ATA 2004C

Chemical special mortar
Pure epoxy, suitable for asphalt screws

Product overview

Item nr.	Designation	Packing Unit
222 222 019	Cartridge ATA 2004C	1
222 223 002	Mixing nozzle for ATA 2004C	1
222 222 014	Squeezing pistol for ATA 2004C	1



Processing Instructions

Temperature in ground	Processing time	Min. curing time
0°C	90 min	144 h
6°C	80 min	48 h
10°C	60 min	28 h
15°C	40 min	18 h
20°C	30 min	12 h
25°C	12 min	9 h
35°C	8 min	6 h
40°C	8 min	4 h